

LOT 13, SHOTOVER RISE

Stalker Road, Queenstown





WELCOME TO FOWLER HOMES

Building kiwi homes since 1984,
let's build yours.

Fowler Homes has been in the home building industry since 1984, we have established a trusted brand with nationwide recognition. Our product offering is diverse, there is no job too big or too small. We provide custom design & build services, a plans range to build from or provide inspiration and direction, knock down and rebuild services, house & land, and turnkey packages across New Zealand.

At Fowler Homes, we pride ourselves on building the home that suits your section, budget, and lifestyle.

We work with you from the start to bring your ideas of your dream home to life, utilising years building experience and industry knowledge.

www.fowlerhomes.co.nz

TURNKEY HOME & INCOME PACKAGE



Specifications

- ↕ □ Section Size 588m²
- ↕ □ Floor Area 200m²
- 🛏 Bedrooms 4
- 🚿 Bathrooms 3
- 🛋 Living 2
- 🚗 Garage 2

**Lot 13, Shotover Rise,
Stalker Road,
Queenstown**

For Sale: \$1,726,000

Rental Assessment

Main House:

\$995-\$1,100 pw

Unit: \$525-\$500 pw

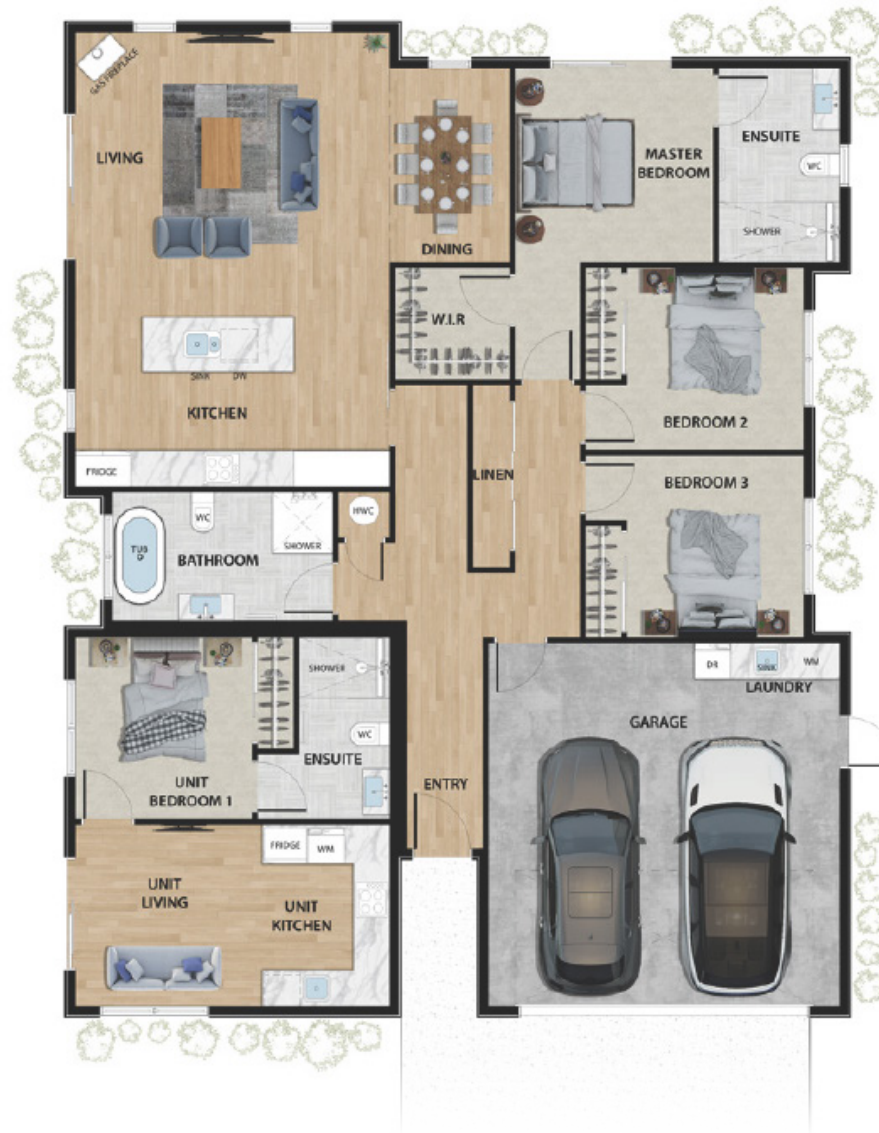
This turnkey home and income property has been designed for the local environment. This property features a spacious three-bedroom main home and a one-bedroom unit. The main living area is open-plan with a scissor truss ceiling and skylights. The master includes an ensuite and walk-in wardrobe. The other two bedrooms are a good size, each with wardrobe systems. The laundry is located in the double-car garage.

The attached one-bedroom is perfect for extended family, guests, an office, or a secondary income stream. Shotover Rise is a thoughtfully designed development project, that ensures a quality style of living for future residents.





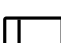



HOUSE PLAN

Lot 13, Shotover Rise,
Off Stalker Road,
Queenstown



Specifications

-  Bedrooms 4
-  Bathrooms 3
-  Living 2
-  Garage 2
-  Length 16.35m
-  Width 12.89m

HOME FEATURES

Lot 13, Shotover Rise, Off Stalker Road, Queenstown

INTERIOR

- Nordzco custom designed kitchen
- Custom wardrobe system
- Walk-in wardrobe to master bedroom
- Timber shelve storage/linen cupboard
- Rinnai high wall heatpump to unit
- Rinnai ducted heat system to main house
- Gas fire
- Tiled bathroom floors, skirting and shower walls with under tile heating
- Harrisons Luxor carpet
- Woodlands oasis laminate flooring
- Velux sky lights
- Thermal heart windows with SoluxE glass

EXTERIOR

- Colour Steel superdek roofing
- Concrete driveway/paths and patios
- Soft landscaping
- Boundary fencing
- James Hardie Oblique cladding
- Vertical timber weatherboard



THE LOCATION

Shotover Rise is located at the entrance of Shotover Country off Stalker Road, beside the Arvida Queenstown Country Club.

These turnkey home and income sections offer investors an opportunity to live in a sought-after neighbourhood close to many essential amenities. Residents will enjoy the convenience of Shotover Primary School, Kawarau Park Medical Centre, Gems Childcare, 11th Avenue by Franks, the Night & Day convenience store and local bus network.

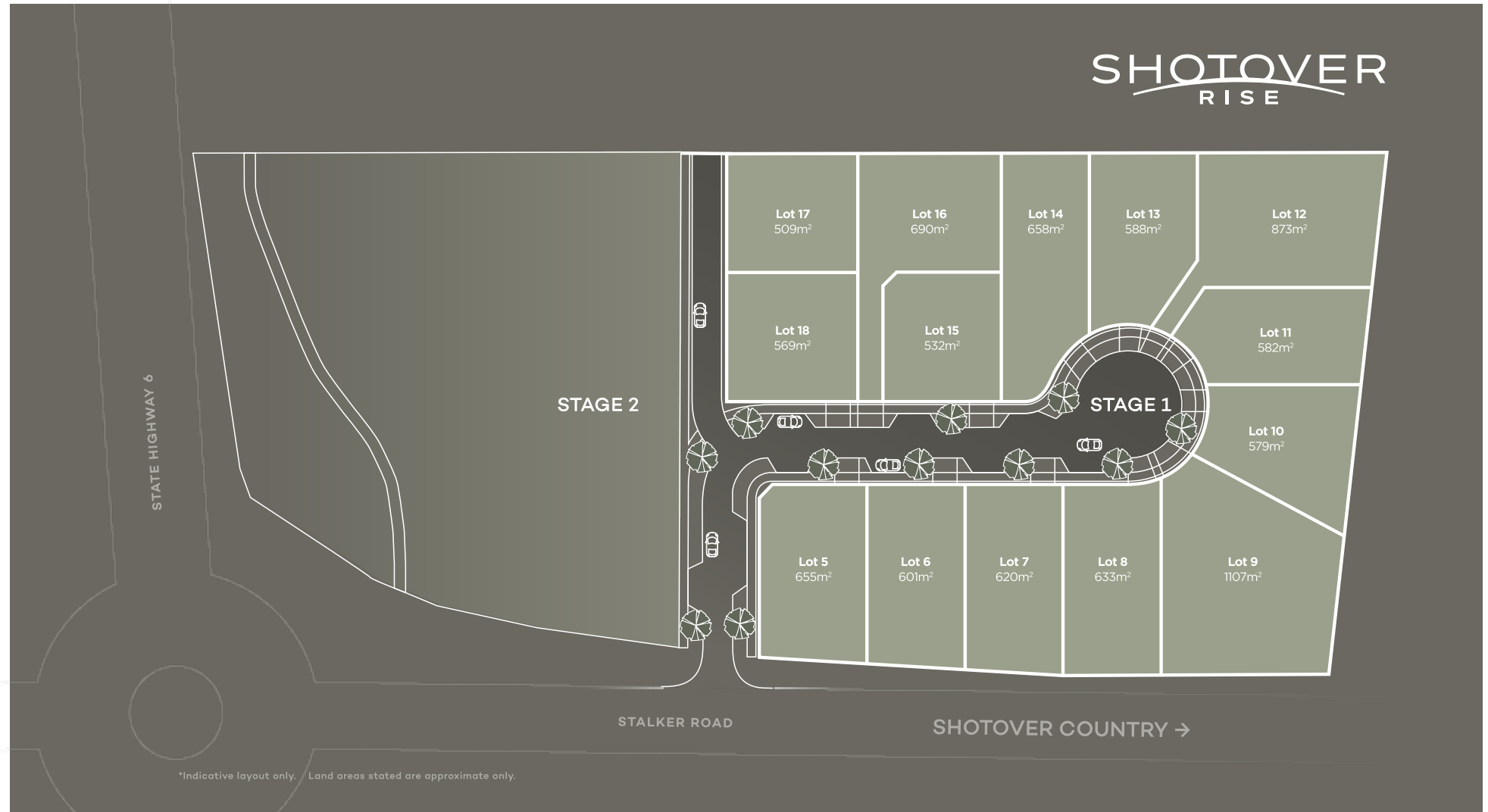
Frankton is a short 5-minute drive where you will find local shopping centres, and the Queenstown Airport.

Explore the nearby Queenstown twin river trails by bike or foot.

Shotover Rise is a thoughtfully designed development project, that ensures a quality style of living for future residents.



THE LOCATION



WHY BUILD WITH US?

6 SOLID REASONS TO BUILD WITH FOWLER HOMES

- 1** — Fowler Homes has been building homes for kiwis since 1984 and are one of the longest standing group home building companies in New Zealand
- 2** — We are New Zealand owned & operated. You will work directly with the business owners and their project management teams
- 3** — We offer a range of build options including custom design & build, standard plans range, house & land, and turnkey packages, knock down and rebuild
- 4** — We work with our clients and custom design your home, to suit your section, budget & lifestyle
- 5** — We have access to the best suppliers, contractors & group pricing rates and present you with a fixed priced contract
- 6** — Build with peace of mind, all our homes come with the 10-Year Master Builders Guarantee.

GUARANTEES

Every Fowler Homes build comes with a 10-year Master Build Guarantee. A Master Build Guarantee protects you through the building process and for the next 10 years.

—

Fowler Homes has a 12-month Building Defect Warranty Period, effective from the date of completion. This covers you for any defects that may become apparent after Completion and Final Inspection.

—

Individual supplier warranties and guarantees will also be available.



CONTACT US



Fowler Homes Queenstown
Jason McGirr, Managing Director
027 324 7666
jason@fowlerhomes.co.nz



Online

Want to find out more about Fowler Homes? Visit fowlerhomes.co.nz for inspiration.



**FOWLER
HOMES**™

Est. 1984

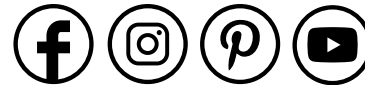
YOUR STYLE OF LIVING

Proud to be locally owned and operated since 1984.

Testimonials

"Thoroughly enjoyed the whole build process with Fowler's. This was our first build so we didn't know what to expect. The communication from Jason, Damian, and Ed was excellent. Such a great team to work with and we would definitely build with Fowlers again. Our house has turned out very nicely, we are very happy with it. The finish is of very high quality." Will and Hamish

"We recently built a new home in Hanley's Farm with Fowler Homes and have been very impressed with them throughout! They completed the build in less than 6 months from start to finish, provided weekly updates on build progress with photos (using a handy app called BuilderTrend), and where there to help every step of the way if we had questions or needed anything. If I have another build project in the future, I will definitely be using them again." Drew Eckman



Social

Connect with us on social media for all the latest news, trend alerts and updates from our team.

@fowlerhomesnz

www.fowlerhomes.co.nz

*Images and floor plans are an artist's impression only.
Interior and Exterior features are subject to change. All
final details are confirmed in the Contract.