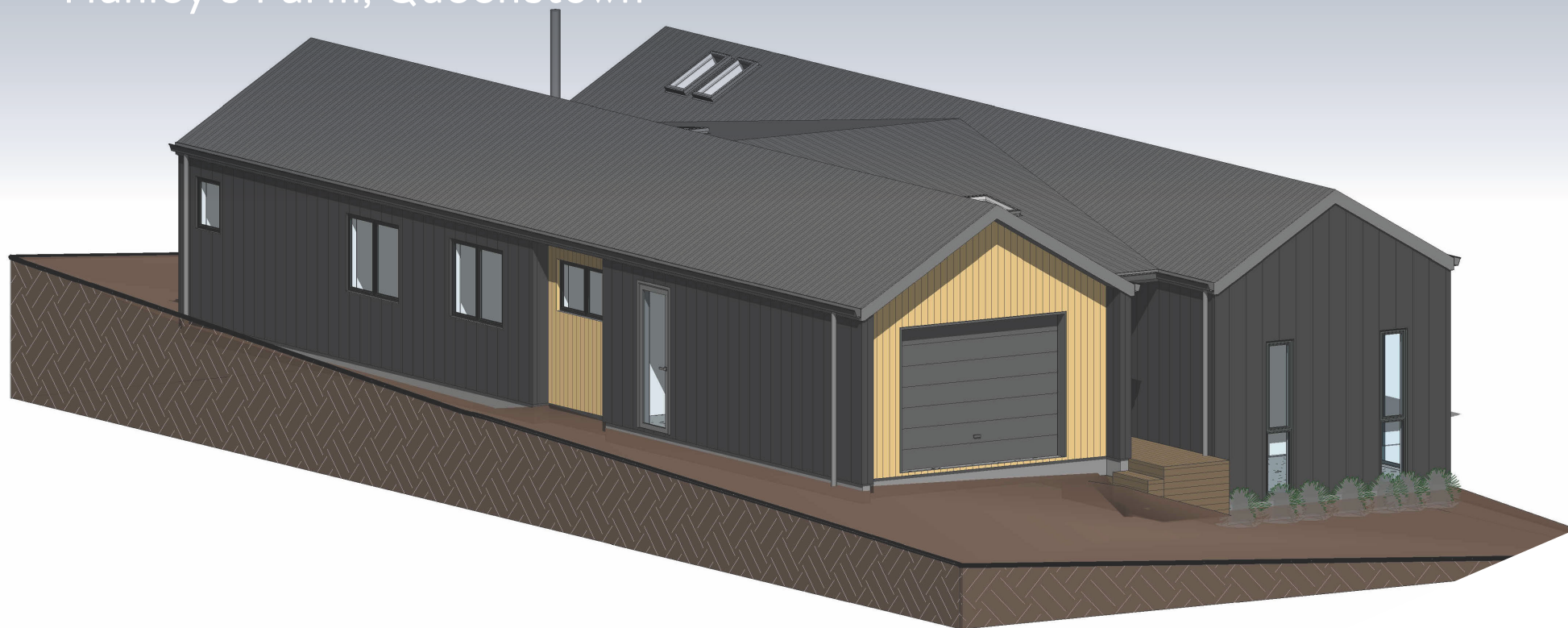


LOT 7204

Hanley's Farm, Queenstown



**FOWLER
HOMES**[™]
Est. 1984
YOUR STYLE OF LIVING



WELCOME TO FOWLER HOMES

Building kiwi homes since 1984,
let's build yours.

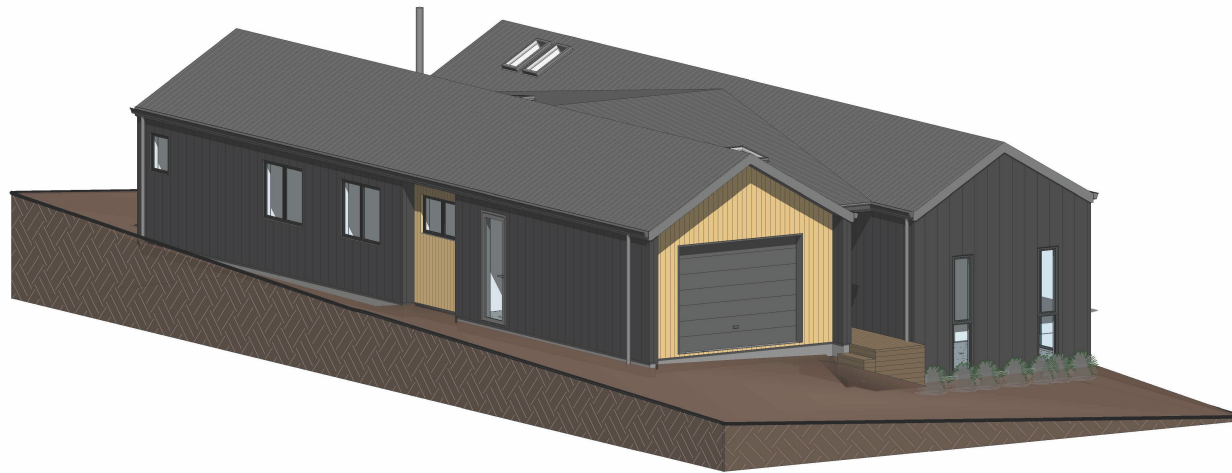
Fowler Homes has been in the home building industry since 1984, we have established a trusted brand with nationwide recognition. Our product offering is diverse, there is no job too big or too small. We provide custom design & build services, a plans range to build from or provide inspiration and direction, knock down and rebuild services, house & land, and turnkey packages across New Zealand.

At Fowler Homes, we pride ourselves on building the home that suits your section, budget, and lifestyle.







We work with you from the start to bring your ideas of your dream home to life, utilising years building experience and industry knowledge.

www.fowlerhomes.co.nz

TURNKEY HOME & UNIT LAND PACKAGE



Specifications

-  Section Size 337m²
-  Floor Area 186m²
-  Bedrooms 4
-  Bathrooms 3
-  Living 2
-  Garage 1

Lot 7204
Hanley's Farm

For Sale: \$1,675,000
Rental Assessment:
\$1,000 - \$1,1500 main
home. \$525 - \$550 unit.

A great 3-bedroom turnkey new home package with 1-bedroom unit attached is now available for purchase in popular Hanley's Farm, Queenstown.

The main home has an open kitchen, dining and living area. The home will suit many family situations with 3-bedrooms, 2-bathrooms, and single car garage with laundry inside.

Designed to capture the views, this home and income property is your opportunity to lay down foundations for a family home with income stream attached.



HOUSE PLAN

Lot 7204 Hanley's Farm, Queenstown



Specifications

 Bedrooms 4

 Bathrooms 3

 Living 2

 Garage 1

 Length 19.29m

 Width 10.18m



HOME FEATURES

Lot 7204 Hanley's Farm, Queenstown

INTERNAL

- Home & Income
- Scissor Truss Ceiling
- Master Ensuite
- Woodburner & ducted heating system
- Living room & hall skylights
- Linen / Storage
- Wardrobe packages
- Nordzco Joinery designed kitchen
- Quality kitchen appliances
- Tiled bathrooms
- Internally insulated walls

EXTERNAL

- Concrete driveway
- soft landscaping
- Fully fenced
- Timber and Stria cladding
- Maxslab 300 concrete insulated slab

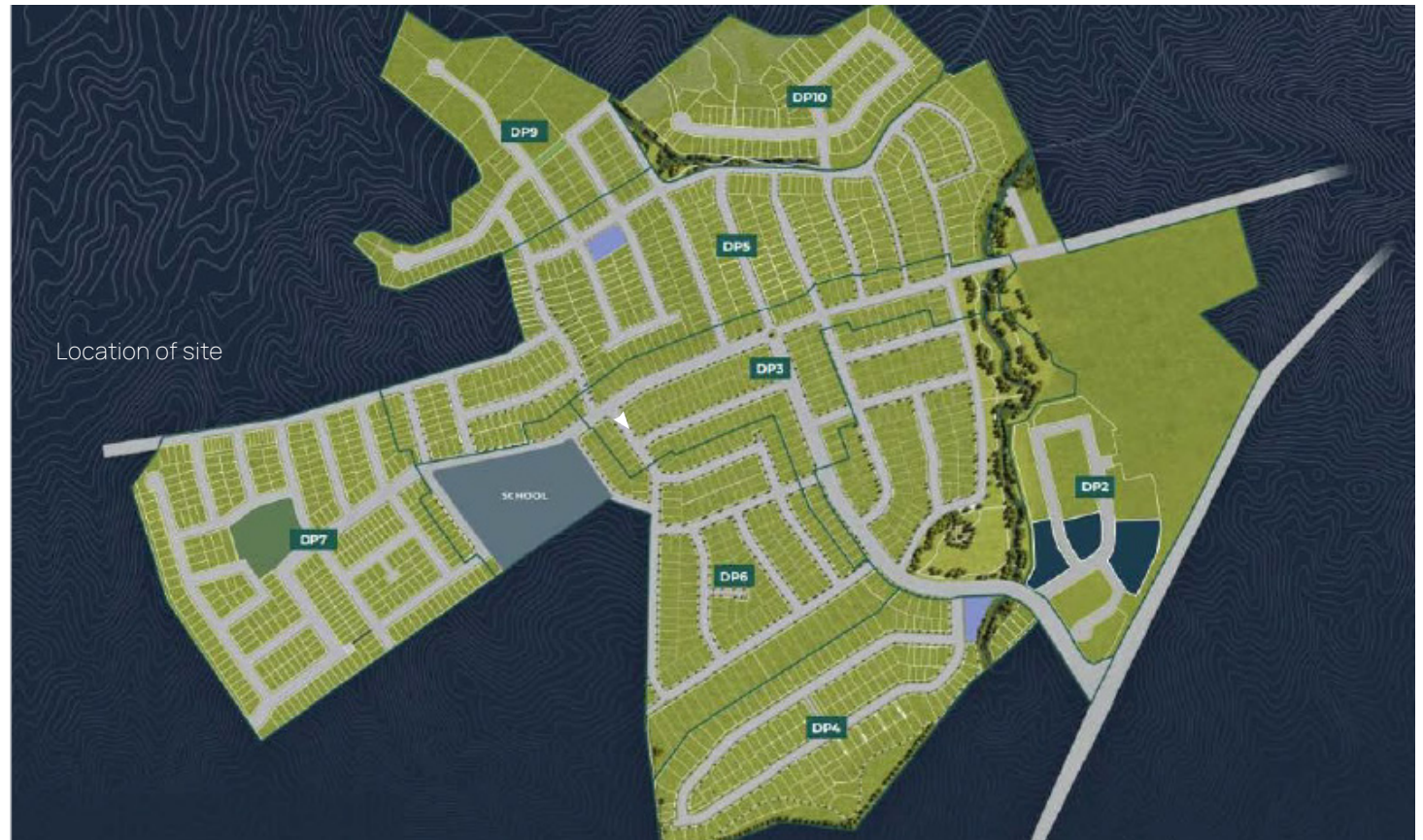


THE LOCATION

Hanley's Farm stretches harmoniously between Lake Wakatipu, Deer Park Heights and The Remarkables on State Highway 6 to Invercargill.

The development is 13-kilometers from central Queenstown, and 6-kilometres from Frankton.

Hanley's Farm has a primary school, day care, an epic pump track, playground, and fitness area and Café Bar. And if you didn't know already, it's near the Jack's Point Golf Course & Clubhouse, and the Remarkables Ski Field!



WHY BUILD WITH US?

6 SOLID REASONS TO BUILD WITH FOWLER HOMES

- 1** — Fowler Homes has been building homes for kiwis since 1984 and are one of the longest standing group home building companies in New Zealand
- 2** — We are New Zealand owned & operated. You will work directly with the business owners and their project management teams
- 3** — We offer a range of build options including custom design & build, standard plans range, house & land, and turnkey packages, knock down and rebuild
- 4** — We work with our clients and custom design your home, to suit your section, budget & lifestyle
- 5** — We have access to the best suppliers, contractors & group pricing rates and present you with a fixed priced contract
- 6** — Build with peace of mind, all our homes come with the 10-Year Master Builders Guarantee.

GUARANTEES

Every Fowler Homes build comes with a 10-year Master Build Guarantee. A Master Build Guarantee protects you through the building process and for the next 10 years.

—

Fowler Homes has a 12-month Building Defect Warranty Period, effective from the date of completion. This covers you for any defects that may become apparent after Completion and Final Inspection.

—

Individual supplier warranties and guarantees will also be available.



CONTACT US



Fowler Homes Queenstown
Jason McGirr, Managing Director
& Licensed Building Practitioner
027 324 7666
jason@fowlerhomes.co.nz



Online

Want to find out more about Fowler Homes? Visit fowlerhomes.co.nz for inspiration.



**FOWLER
HOMES**™

Est. 1984

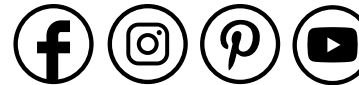
YOUR STYLE OF LIVING

**Proud to be locally owned
and operated since 1984.**

Testimonial

"We can wholeheartedly recommend Fowler Homes to anyone seeking a building company that delivers quality, professionalism, and a hassle-free building experience." Lisa Leftley

"Jason and his team have an excellent knowledge of the market, have good connections in the supply chain, and have quality systems in place. As a further indication of our satisfaction with Jason and his team at Fowler Homes - we are doing it all again!" Robin Martin



Social

Connect with us on social media for all the latest news, trend alerts and updates from our team.

@fowlerhomesnz

www.fowlerhomes.co.nz