

PETRONAS

□ Elevator Plan Series






Everything Kiwis call home





PETRONAS

DESIGN OVERVIEW

Floor Size (m²) **265**

 **3**
 **4+**
 **2**

 **2**
 **2**

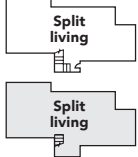
APPROXIMATE ROOM SIZES (m)

LOUNGE/DINING	7.8 x 4.6
MEDIA	4.9 x 4.2
OFFICE	2.6 x 2.3
DECK	24.75 m ²
GARAGE	6.0 x 7.2
MASTER SUITE*	4.2 x 5.3
BEDROOM 2	3.0 x 3.0
BEDROOM 3	3.2 x 3.0
GUEST WING	4.8 x 4.6

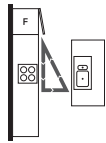
* Size excludes ensuite and walk-in wardrobe

LAYOUT OVERVIEW

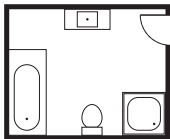
Two Level Layout:



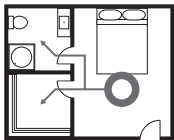
Kitchen Layout:
Single wall with island



Bath Layout:
All in one



Ensuite Layout:
Separate



FOR MORE INFORMATION ABOUT THIS DESIGN: > platinumhomes.co.nz keyword search **PETRONAS**

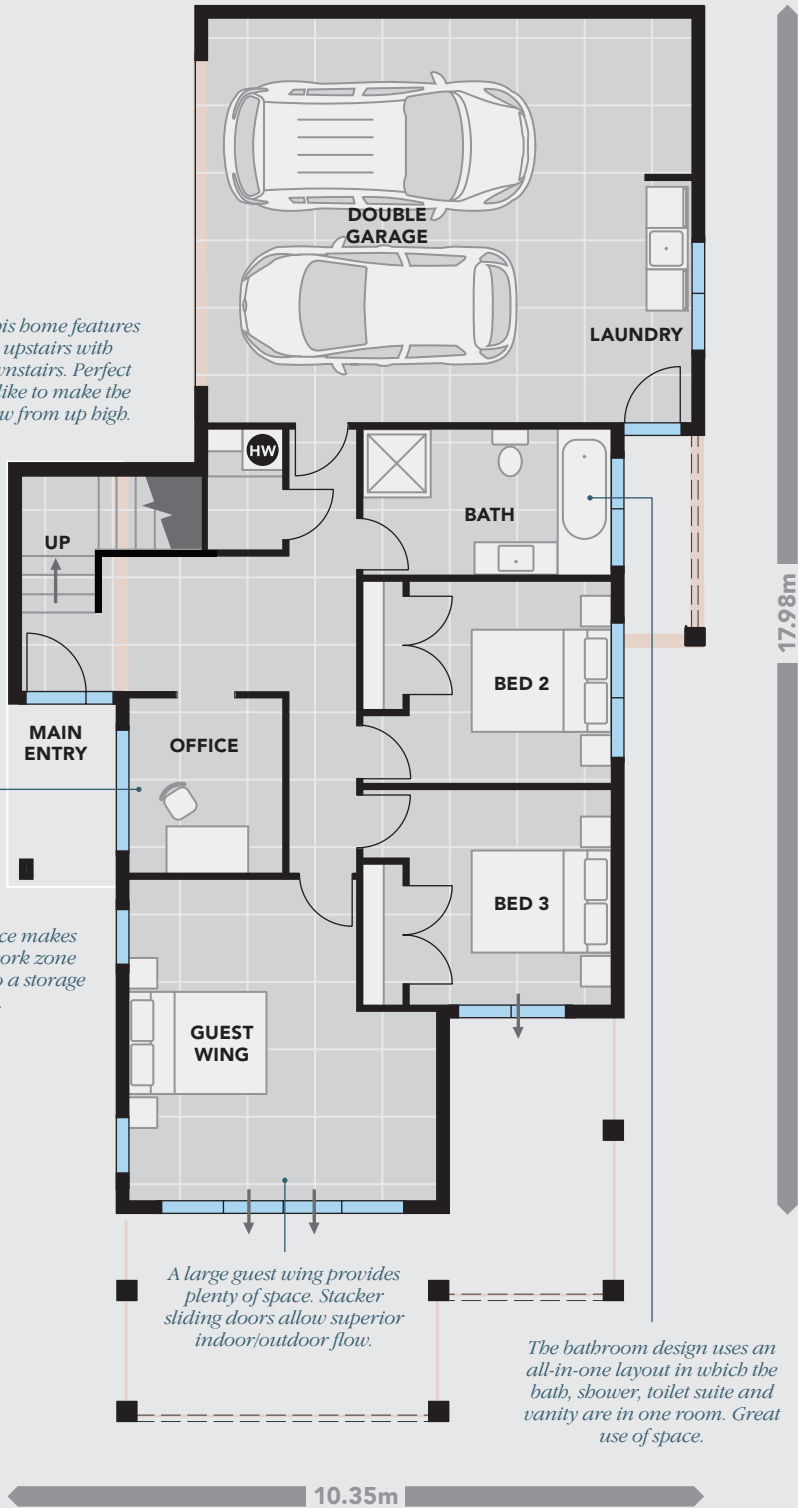
DOWNSTAIRS

The design of this home features living zones upstairs with bedrooms downstairs. Perfect for those who like to make the most of the view from up high.

A separate office makes for a perfect work zone — or convert to a storage room.

A large guest wing provides plenty of space. Stacker sliding doors allow superior indoor/outdoor flow.

The bathroom design uses an all-in-one layout in which the bath, shower, toilet suite and vanity are in one room. Great use of space.



= 1 m²

= NEXT LEVEL INDICATION

→ = ACCESS

Punctuated by a large, welcoming foyer that sets the mood for the rest of the home, the **Platinum Homes® Petronas** is a masterpiece of good living. A large undercover outdoor area leads off the guest wing/games room creating a beautiful setting to secure some shade, sit back and read a book. The extra large double garage offers plenty of room for storage or even a workshop area. Upstairs, the **Petronas** becomes an entertainers delight with an inviting layout culminating in the open plan kitchen/dining area leading directly onto the large outdoor deck – perfect for summer evenings. In the evenings, take in a movie in the media room before retreating to the lavish master suite. In or out, the **Petronas** is just stunning.

The master suite uses a separated layout breaking the area into three zones — sleeping, wardrobe and ensuite. Each space is a distinctly different space from the other.

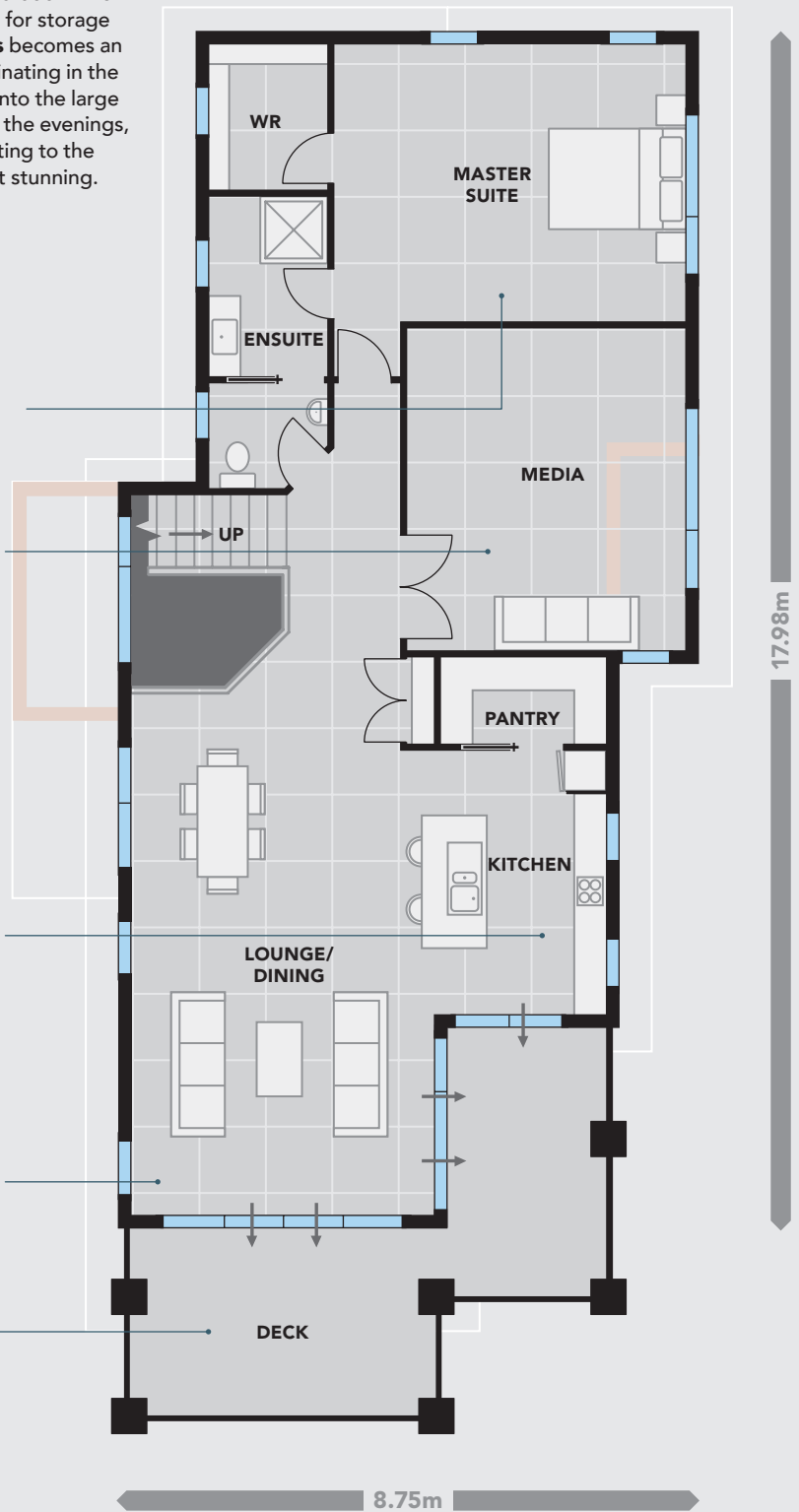
This design features a purpose designed media room — a superb space for watching your favourite movies or listening to music.

The kitchen design uses a single wall with island bench layout — creating simple, clean lines. The inclusion of a separate walk-in pantry ensures plenty of storage space and doubles as a food preparation area when the need arises!

Spacious open plan living zones are perfect for entertaining and family events. Stacker sliding doors off living zones allow balcony access.

Huge deck area is perfect for summer evenings and a glass of wine with friends and family.

UPSTAIRS



■ = 1 m²

— = NEXT LEVEL INDICATION

→ = ACCESS



OUR PROMISE TO YOU

We believe we offer our customers the **best value home** for their budget, but we also know customers shop around! If you are offered what you believe to be the same specification as a Platinum Home at a better price from one of our competitors — bring us the **Building Contract** before you sign and we'll show you why we offer **better value!**

That's our promise to you.

Your Platinum Homes Consultant:

Showhomes nationwide
0508 752 846
platinumhomes.co.nz

Everything Kiwis call home

